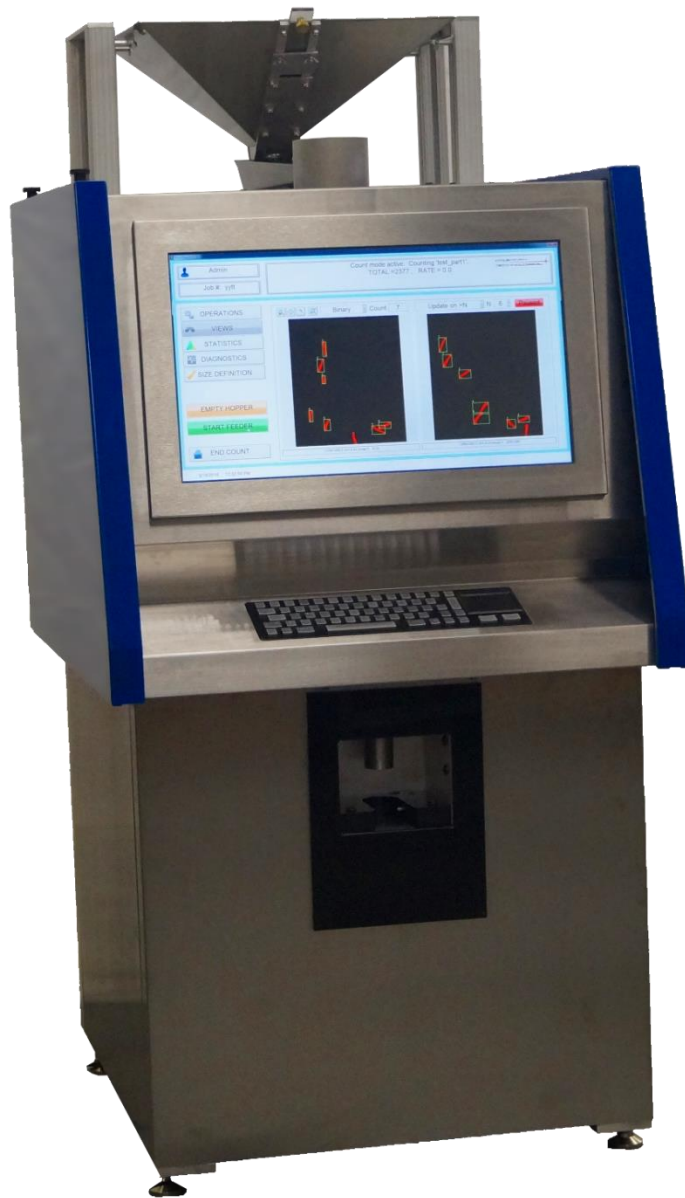


# PerfectCount

*When Speed AND Accuracy Count*



*The World's Fastest  
High Accuracy Small  
Object Counter*

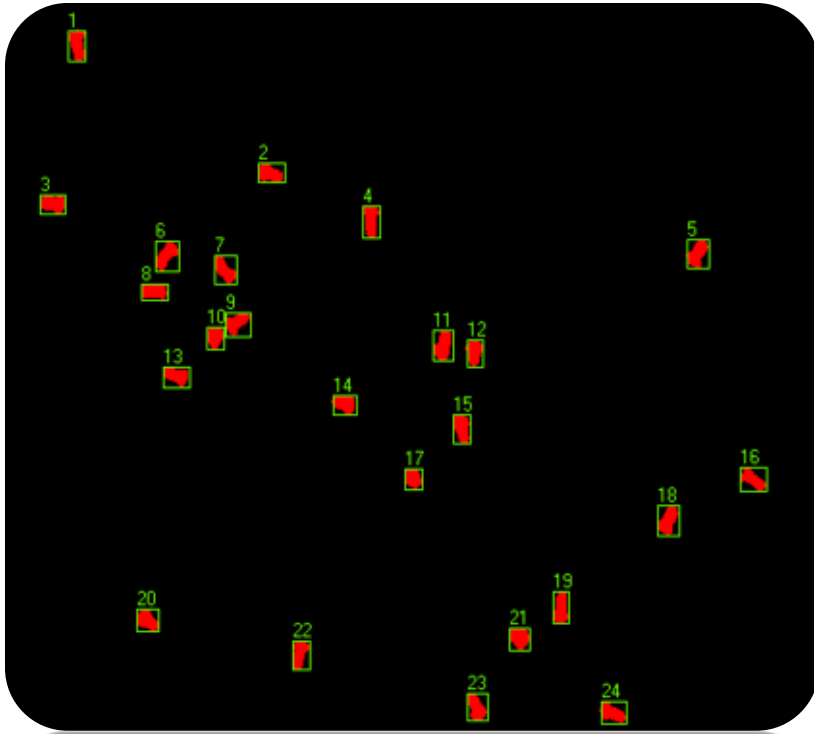
*Counts a Wide Variety of  
Shapes, Sizes  
& Materials*

COLEMAN  
TECHNOLOGIES INC.



5131 West Chester Pike  
Newtown Square, PA 19073  
Voice: (610) 459-9646; Fax: (484) 428-2020  
Email: [sales@colemantech.com](mailto:sales@colemantech.com)  
Web: [www.colemantech.com](http://www.colemantech.com)

*No more need to estimate  
by weight...*



*...it individually counts  
each object using state-  
of-the-art machine vision  
technology.*

Counting small objects or parts is one of the most tedious and time consuming tasks. Common practice is to estimate the number of parts by their weight. Unfortunately, varying sizes and material densities often lead to wasteful overfill.

PerfectCount solves this problem by using vision-based technology to individually count each object at lightning fast speeds. How fast? 1.25 mm pellets can be counted at over 1,500 per second!



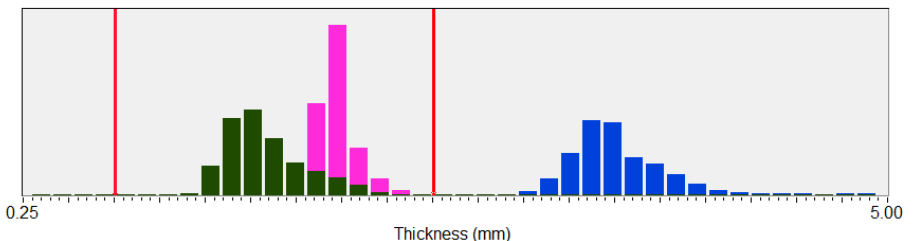
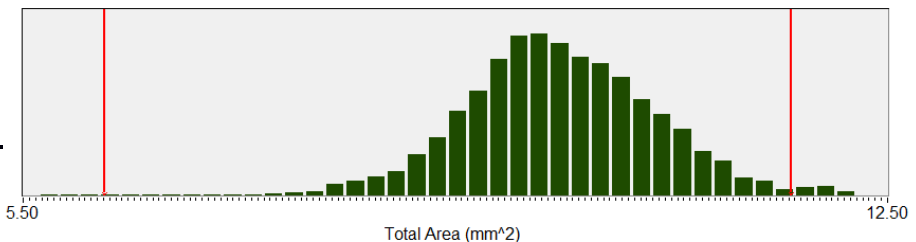
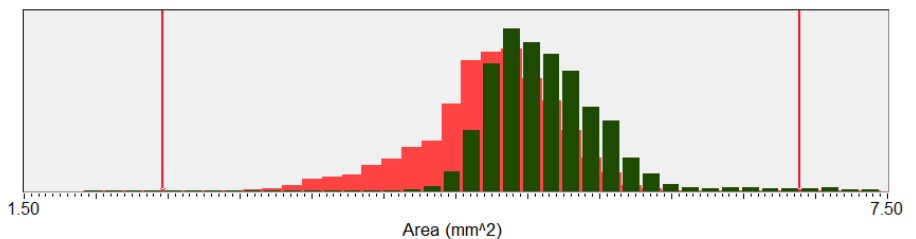
*Unlike other counting machines, PerfectCount is rated in **parts per second**, not parts per minute.*

PerfectCount utilizes digital imaging to see the parts as they fall down a chute. PerfectCount uses powerful proprietary algorithms to count each part, even when many parts fall at the same time.

part size (mm)	99.5% accuracy speed (parts/sec)
2	760
5	315
12.5	140
25	68

PerfectCount quickly learns new parts. The learned spatial parameters allow for highly accurate counts as well as foreign object detection.

*Automatically measures statistical size information*

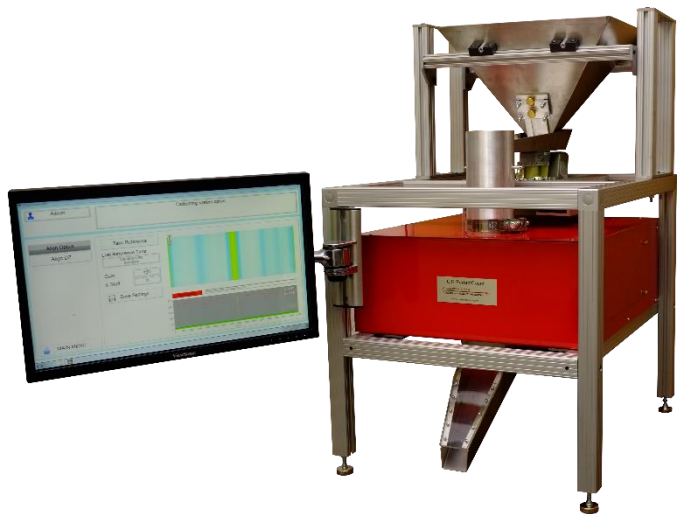


In addition to counting, PerfectCount provides real-time information about the three-dimensional size distribution of the parts.



## Features:

- Packing and counting modes
- Counts **objects between 0.3 and 30 mm** in maximum dimension
- Works with **all materials and shapes**: transparent glass, plastic, polished metal, rings, spheres, cylinders, or complex geometries
- Automatically **learns your parts** and doesn't count foreign objects or broken parts
- **Touch screen** user interface
- Available in **floor mount, table mount, and kiosk** options



Please contact us for more information.

Phone: 610-459-9646 Ext. 1 (sales)

Email: [sales@colemantech.com](mailto:sales@colemantech.com)

Web: <https://colemantech.com/perfect-count>

